

CERTIFICATE OF LOCATION OF GOVERNMENT CORNER

EAST QUARTER Corner of Section 3, Township 106, Range 39, 5TH P.M.

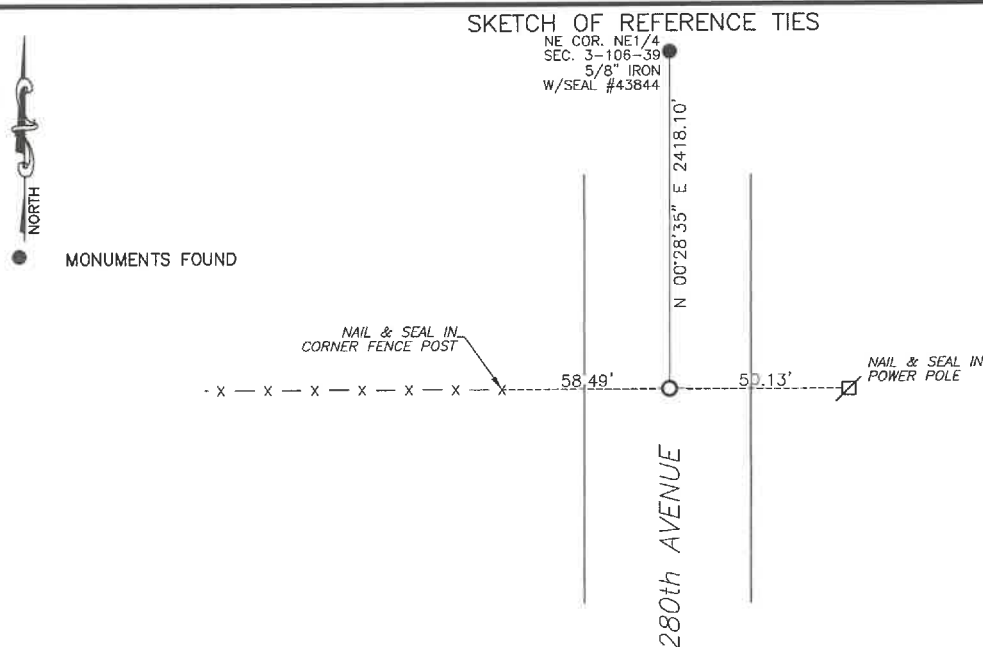
STATE OF MINNESOTA, County of MURRAY

At the corner location shown on the sketch:

☒ On 7/22/2024 found a 3/4" iron pin
DATE

☐ left monument as found, ☐ lowered monument, ☒ removed monument (explain)

☒ On 1/16/2025 placed a 5/8" iron with seal #43844 at the position of the 3/4" iron
DATE



Murray County
Coordinate System NAD83 (1996)

N: 161072.821
E: 569489.920

WGS84

LAT: 44°00'54.9834"
LON: -95°30'09.1485"

Statement of evidence relative to this corner location is on back of page.

I hereby certify that this document and the data contained herein was prepared by me or under my direct supervision.

Daniel L. Buettel
License No. 43844

3/12/2025
DATE

MAR 13 2025
Karen Brown
MURRAY COUNTY RECORDER

Statement of Evidence

EAST QUARTER CORNER SECTION 3, T106N, R39W of the 5th P.M.

In September 1858, W.J. Neely surveyed the east township line.

In July of 1861, J.W. Myers surveyed the north, south, and west township lines.

In August of 1861, Wellman & Smoot subdivided the township.

A survey from February 1934 shows a concrete monument at the corner.

County records from 1967 show a $\frac{3}{4}$ " iron pin set over top of the concrete monument.

On July 22, 2024 found a $\frac{3}{4}$ " iron pin. Removed and dug a 5'x8'x7' deep hole with a backhoe, found two $\frac{1}{2}$ "x2"x18" long wooden hubs. Recorded the position and dug beneath the hubs and found nothing. The hubs were never recorded so we held to the $\frac{3}{4}$ " iron pin.

Returned on January 16, 2025 and placed $\frac{5}{8}$ " iron with seal #43844 at the position of the $\frac{3}{4}$ " iron pin.